



Mastercool[®] Inc.
"World Class Quality"

1 ASPEN DRIVE, RANDOLPH, NJ 07869
PHONE: 973-252-9119 / FAX: 973-252-2455
WEB: WWW.MASTERCOOL.COM

ARCTIC COMMANDER

Mastercool introduces its new ARCTIC COMMANDER line of RRR machines. Equipped with the latest technology, all models come standard with an 8" command center. The graphic user interface (GUI) will enable navigation through all functions and features with the greatest of ease. There is no longer a need to read any external instructions or paper manuals, simply sit back, watch and learn how to use your machines. All machines are also equipped with Wi-Fi capabilities; allowing for realtime, interactive communication and troubleshooting. ***It's about time somebody introduced RRR machines for the 21st century!***



COMMANDER4000



COMMANDER3000



COMMANDER2000

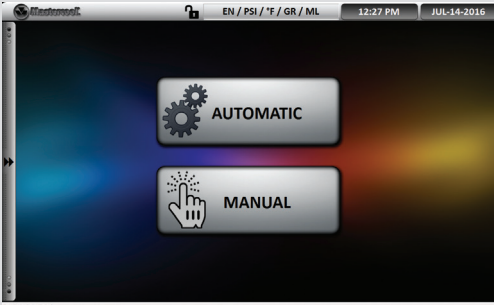


COMMANDER1000

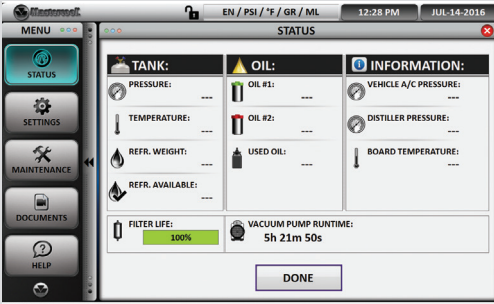
	COMMANDER4000 (110V) COMMANDER4000-E (220V) R1234YF & HYBRID	COMMANDER3000 (110V) COMMANDER3000-E (220V) R134A & HYBRID	COMMANDER2000 (110V) COMMANDER2000-E (220V) R134A FULLY AUTOMATIC	COMMANDER1000 (110V) COMMANDER1000-E (220V) R134A SEMI-AUTOMATIC
8" Color Command Center with Touch Screen	X	X	X	X
Automatic and Manual Procedures	X	X	X	Manual procedures only
Refrigerant Database	X	X	X	Optional
Automatic Vacuum Leak Test: Programmable	X	X	X	X
Auto Oil Discharge	X	X	X	X
Auto and Manual Air Purge	X	X	X	X
Auto Filter and Full Tank Alarm	X	X	X	X
Low Refrigerant Alarm	X	X	X	X
Auto Oil Injection	NA	NA	X	NA
Thermal Printer	X	X	Optional	Optional
Hose Flushing	X	X	NA	NA
Vehicle A/C System Flushing	X	X	NA	NA
Tank Heater	X	X	X	X
6 CFM Vacuum Pump	X	X	X	NA
3 CFM Vacuum Pump	NA	NA	NA	X
Refrigerant Identifier	X	NA	NA	NA
On-board Instruction Manual	X	X	X	X
Multiple Languages	X	X	X	X
On-board Unit Conversion Calculator	X	X	X	X
New Cabinet Design for Increased Air Flow	X	X	X	X
Large Analog Gauges	X	X	X	X
Hard Wired Power Cord	X	X	X	X
Hose Coupler Storage	X	X	X	X
Solid Durable Wheels with Locking Casters	X	X	X	X
Multi-colored LED Status Bar	X	X	X	NA
Self-Diagnostic Check	X	X	X	X
Wi-Fi Capable	X	X	X	X
Dimensions (mm): 1150 (h) x 600 (w) x 770 (d)	X	X	X	X

For a R1234yf machine without a refrigerant identifier, please use part number commander4000-x (for 110V model) or commander4000-E-X (for 220V model)

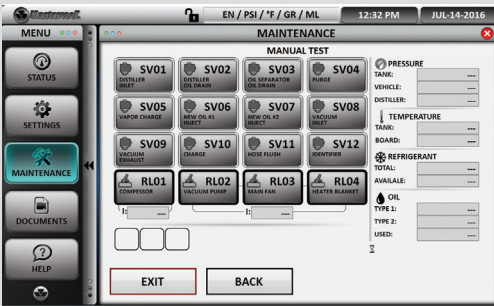
8" COLOR TABLET WITH TOUCH SCREEN FEATURES:



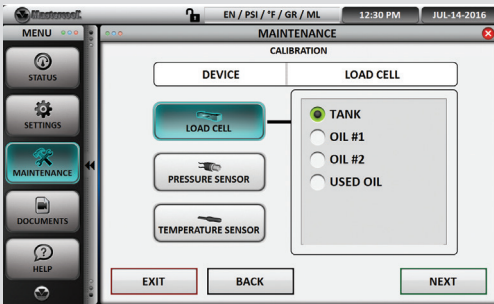
Home Screen
allows for quick touch selection of options



Status Screen
for quick reference of resources



Maintenance Screen
offered only to authorized service technicians allowing for quick and easy diagnosis



Maintenance Screen
offered only to authorized service technicians allowing for quick and easy diagnosis

